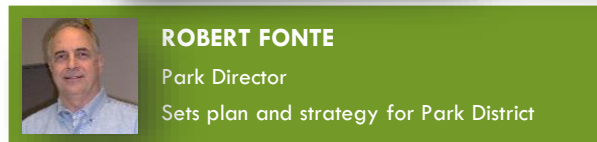


# STARK COUNTY PARK DISTRICT

## ORGANIZATION CHART: MANAGEMENT TEAM

UPDATED: JANUARY 2022



**SARAH BUELL**  
Administration &  
Project Manager

- Develops and guide implementation of strategic plan
- Acquisitions and easements
- Project implementation
- Oversees marketing, information technology, project administration and grant and events staff



**BARBARA WELLS**  
Financial Manager

- Maximize ROI while minimizing risk
- Control structure for use, transfer and investment of funds
- Financial analysis (forecasting, budgeting)
- Oversees enterprises

**VACANT**  
Education  
Manager

- Development, oversight, evaluation of education programs
- Outreach and engagement
- Oversees education programming staff



**JUSTIN LAPS**  
Chief/Public  
Safety Manager

- Planning, coordination, staffing, management and direction of Park District Rangers
- Maintain code of conduct related to ordinances, laws, procedures and policies



**RICHARD SUMMERS**  
Operations  
Manager

- Plan and organize the operations and maintenance of parks, trails, facilities and projects
- Oversees construction, facilities and parks and trails
- Manages fleet operations
- Responsible for reservation services



**TALULA WIATER**  
Natural Resources  
Manager

- Design, execute and maintain all aspects of land and natural resources management plans
- Oversee operations of Wildlife Conservation Center

**VACANT**  
Human Resources  
Manager

- Plan, direct, coordinate and manage human resources functions
- Organizational planning and implementation of personnel policies, regulator compliance, compensation and benefits
- Full employee life cycle – recruiting, onboarding, employee relations, training and development and separation

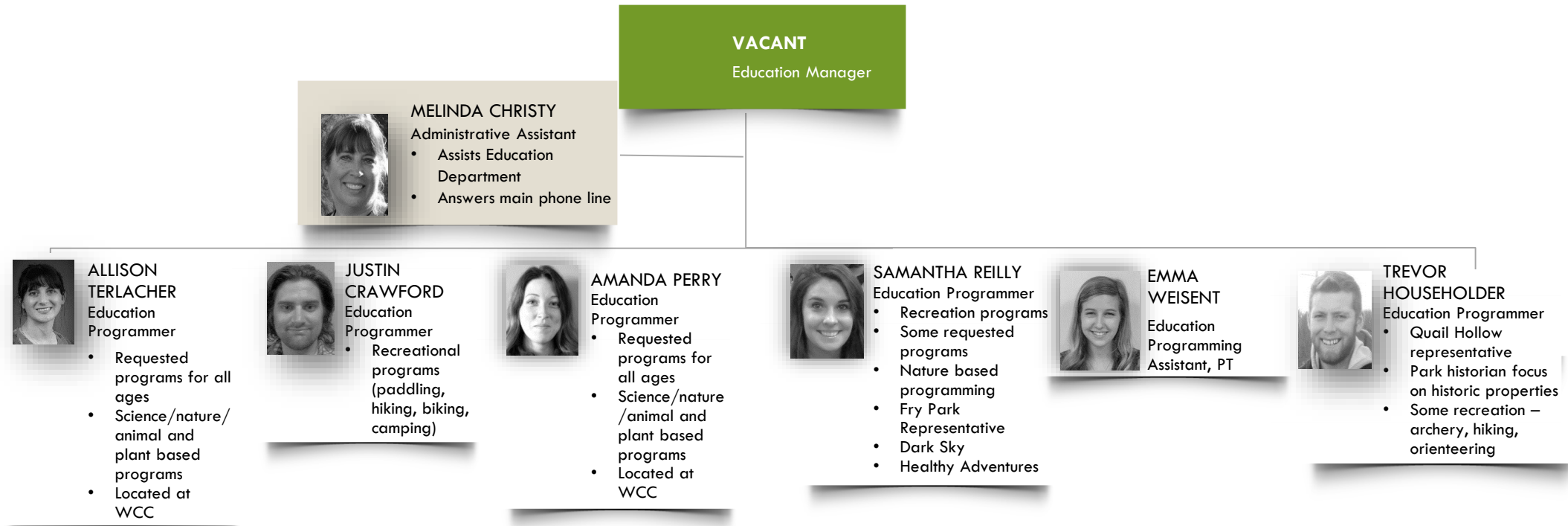
# STARK COUNTY PARK DISTRICT

## ORGANIZATION CHART: ADMINISTRATION DEPARTMENT (16 FT, 1 PT, 18-20 SEASONALS)



# STARK COUNTY PARK DISTRICT

## ORGANIZATION CHART: EDUCATION DEPARTMENT (7 FT, 1 PT)



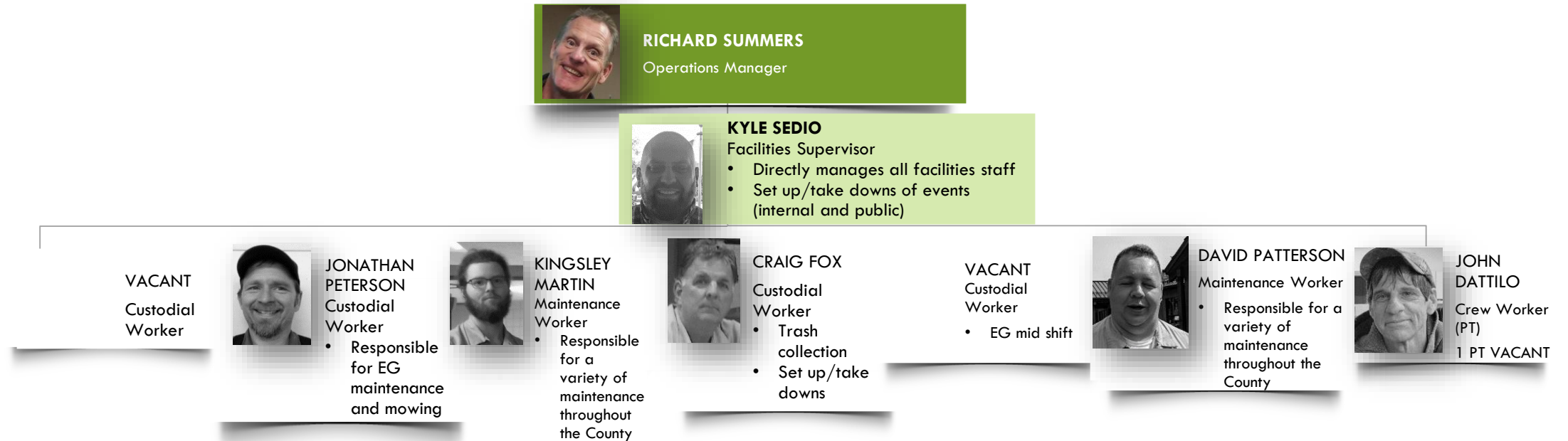
# STARK COUNTY PARK DISTRICT

## ORGANIZATION CHART: PUBLIC SAFETY DEPARTMENT (13 FT, 1 PT)



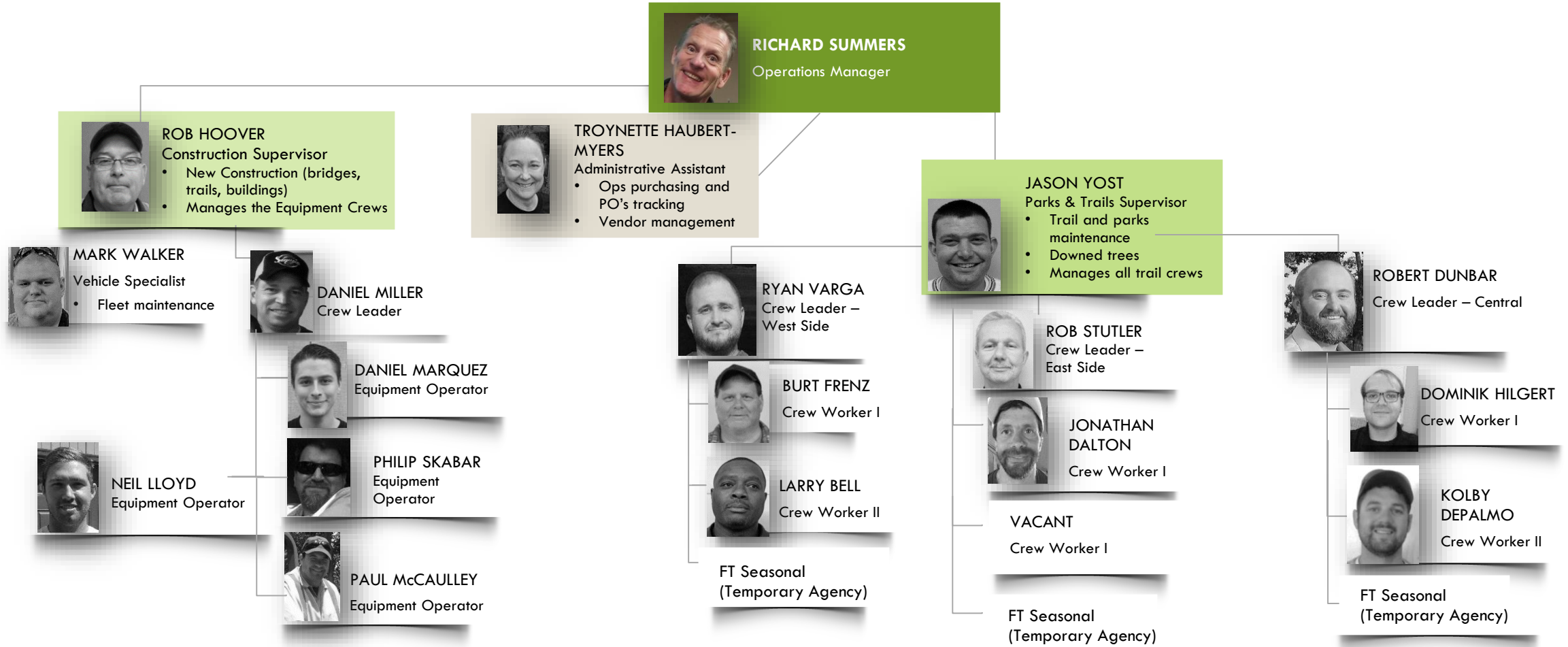
# STARK COUNTY PARK DISTRICT

## ORGANIZATION CHART: OPERATIONS DEPARTMENT – FACILITIES GROUP (7FT, 2PT)



# STARK COUNTY PARK DISTRICT

## ORGANIZATION CHART: OPERATIONS DEPARTMENT – PARK AND TRAIL MAINTENANCE & CONSTRUCTION GROUPS (18 FT, 3 TEMPORARY)





# STARK COUNTY PARK DISTRICT

## ORGANIZATION CHART: NATURAL RESOURCES DEPARTMENT (9 FT, 3 PT, 9 SEASONALS, 6 INTERNS)

