

IMPLEMENTATION STRATEGY

The Project Implementation Sequence outlines the basic criteria required to achieve the goals defined for Quail Hollow Park. This plan represents the major steps that need to be taken to accomplish the master plan including the approval of the final design solutions, establishment of development priorities, fundraising, and appropriation of funds and construction of the proposed development. This will determine how the plans will become reality. The recommended project sequencing reflects a logical progression of improvements based on immediate needs, priorities set forth by the community and SCPD staff, and constructability.

Recommended Phasing

Project sequencing reflects a logical progression of improvements based on immediate needs, priorities set forth by the community and SCPD staff, and constructability. Projects noted as “ANY” can be completed at any time during this phase. Projects which may be completed in any phase are further noted with an asterisk (ANY★).

PHASING RECOMMENDATIONS & SEQUENCING

Phase I Phasing Recommendations	
Sequence	Park Element
1	Close Trails to be abandoned (SCPD)
2	Provide Wayfinding Signage (SCPD)
3	Stabilize Trails to be Improved (SCPD)
4	Recondition Existing Roadways (Interim Phase – add speed humps)
5	Renovate Little House for Offices & Public Meeting Rooms
6	Renovate Caretaker’s House
7	Remove Vault Restroom (Romtec near Manor House)
ANY	Renovate Manor House for Historic Tours & Rental Groups
ANY	Renovate Carriage Hosue to Maintain the Base Building and SCPD Offices
ANY★	Renovate Little House for Residential Rental

Improvements focus on stabilization and renovation of existing amenities to support current programming needs.

Phase II Phasing Recommendations	
Sequence	Park Element
1	Relocate Equestrian Trail Parking to Group Camp Site (temporary, SCPD)
2	Expand and Rehabilitate the Pond, Store Soil on-site
3	Main Entrance Drive – Mill & Resurface
4	Extend Entrance Drive to Duquette Avenue
5	Construct Loop Drive, Link to Little House Drive, Great Lawn Parking Area
6	Construct Manor House Parking Area (south of house)
7	Construct Pond Parking Area
8	Pave Little House Driveway & Parking Area, Install Gates
9	Pave Carriage House Parking Area
10	Construct Heritage Loop Trail
11	Install Heritage Loop Interpretive Signs
12	Construct Discovery Trail/QH Historic Timeline (include “Nature for All” Trail Repair)
13	Install Water Well (at Pond Area for Restrooms & Nature Center)
14	Install Septic System (at Pond Area for Restrooms & Nature Center)
15	Construct Large Shelter with Fireplace & Flush Restrooms
16	Construct Fishing Pier & Boardwalk Crossing at Pond
ANY	Develop Picnic Areas at Pond
ANY	Install Natural Play Area

Improvements focus on expansion and rehabilitation of the pond as an environmental, educational, and community resource. In addition, this phase includes roadways and parking area improvements to support park programming.

Phase III Phasing Recommendations	
Sequence	Park Element
1	Develop Manor House Terrace, Stage & Garden
2	Develop Welcome Plaza
3	Develop Hillside Overlook Plaza
4	Construct Bee Keeping & Small Play Area (at Little House)
5	Develop Outer Loop and Connector Trails (includes 3 pedestrian bridges)
6	Construct North/South Connector Trail
7	Construct Trailhead along Pontius Road
ANY★	Develop Wildflower Meadows to support Bee & Butterfly Habitat

Improvements focus on the development of the pedestrian and multi-use trail network, primary pedestrian gathering areas, and the Manor House terrace to support special events.

Phase IV Phasing Recommendations	
Sequence	Park Element
1	Construct Equestrian /Mountain Bike Trailhead (parking, vault restroom, kiosk and gates)
2	Construct Small Shelter (near Trailhead & Group Camp Area)
3	Develop Group Camp Area
4	Construct Maintenance Building, Exterior Storage, and Parking Area
5	Relocate Fuel Tanks to Maintenance Area
ANY	Provide Potable Water & Upgrade to Flush Restroom (at Mountain Bike/ Equestrian Trailhead)
ANY	Develop Cemetery/Farm 1 Interpretive Area
ANY	Improve Equestrian/Shared Use Trails
ANY	Improve Mountain Bike Trails

Improvements focus on development of the specialty trail network, group camp area, and maintenance area.

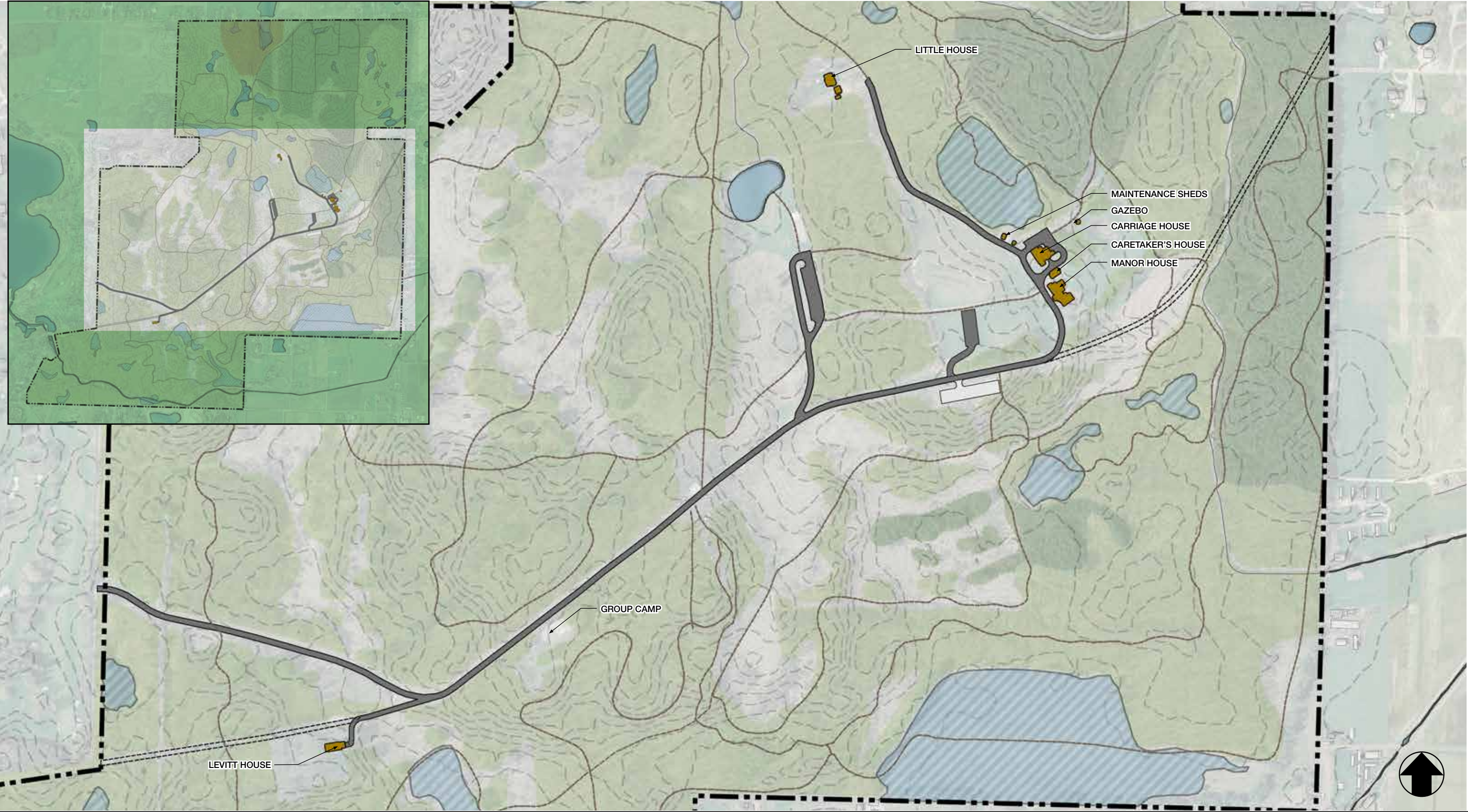
Phase V Phasing Recommendations	
Sequence	Park Element
1	Construct Nature Center (utilize well, and propane tanks)
2	Renovate Carriage House for Visitor’s Center, Offices, Gathering Area
3	Develop North Plaza (adjacent to Carriage House)
4	Construct Observation Deck (adjacent to Carriage House)
5	Construct Observation Platform at Bird Sanctuary
ANY★	Develop Nature Walk Area
ANY★	Develop Observation Overlooks
ANY★	Construct Trailhead along Swamp Street
ANY★	Add Lighting to Pond, Manor House Parking Areas & the Discovery Trail
ANY★	Extend Tel/Data Conduit (Congress Lake Road to Carriage House & Little House)
ANY★	Connect to Public Utilities
ANY★	Extend Natural Gas into the Park

Improvements focus on development of the Nature Center and the renovation of the Carriage House to realize the full potential of the anticipated park programming.

Future Phasing Recommendations	
Sequence	Park Element
ANY★	Construct Small Shelter at the Great Lawn
ANY★	Develop Victory Garden
ANY★	Develop Perennial Garden at Manor House (include Gazebo & Fire Pit)
ANY★	Pave Levitt House Driveway
ANY★	Develop Installations along the Discovery Trail/QH Historic Trail
ANY★	Rehabilitate Congress Lake Outlet Stream

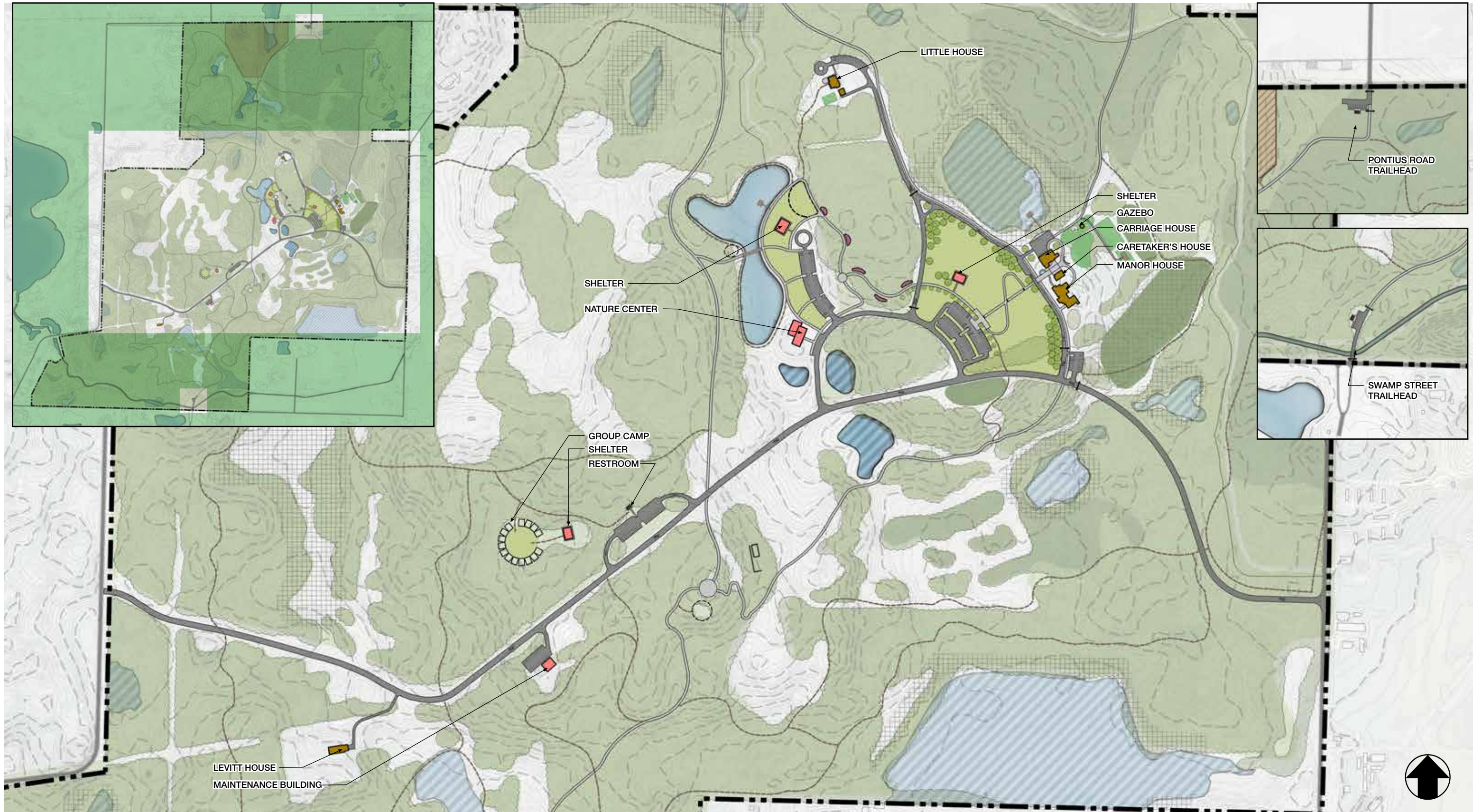
Improvements focus on amenities that will expand programming opportunities to further enhance the park experience.

PHASING PLAN - EXISTING CONDITIONS

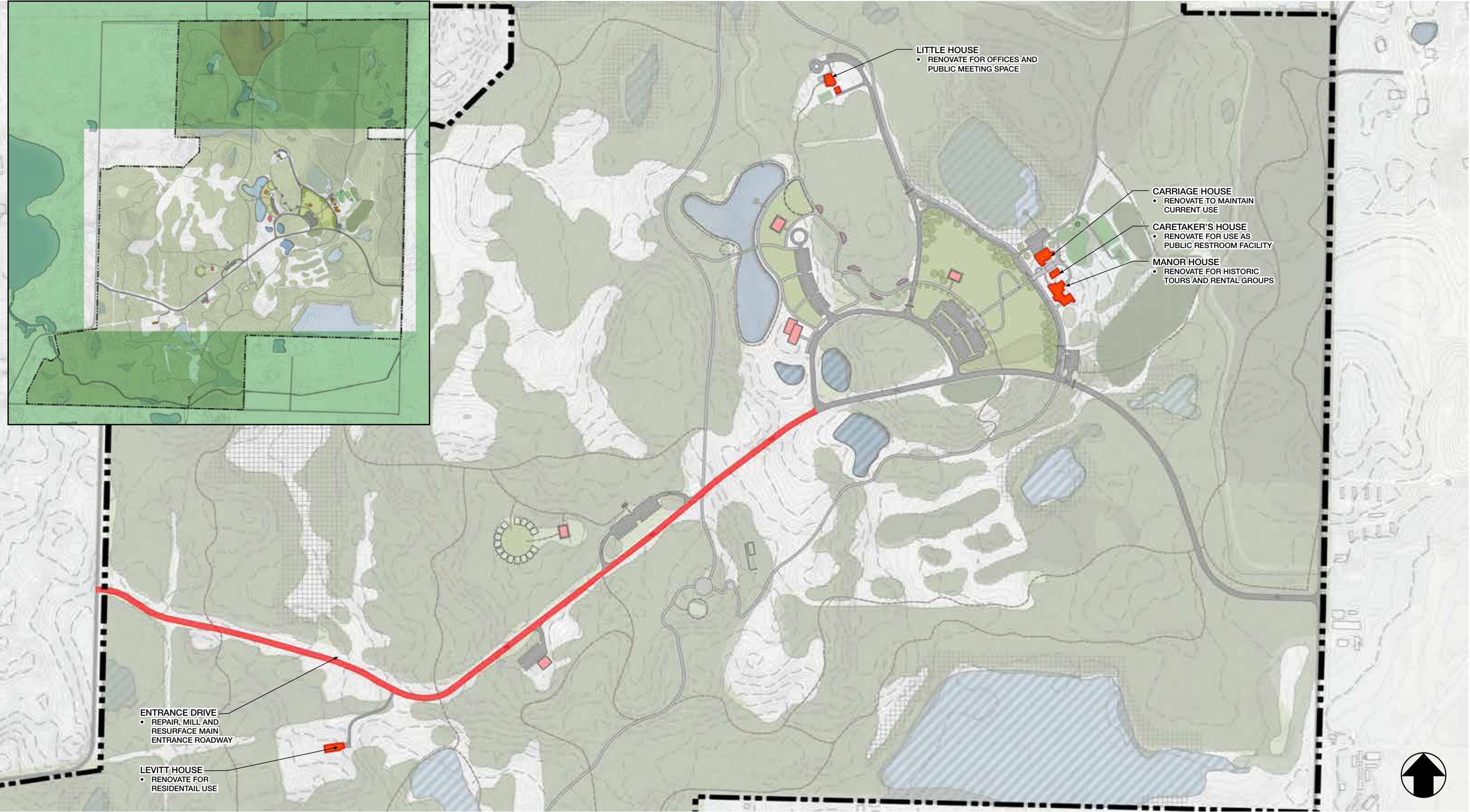


Existing Conditions Plan

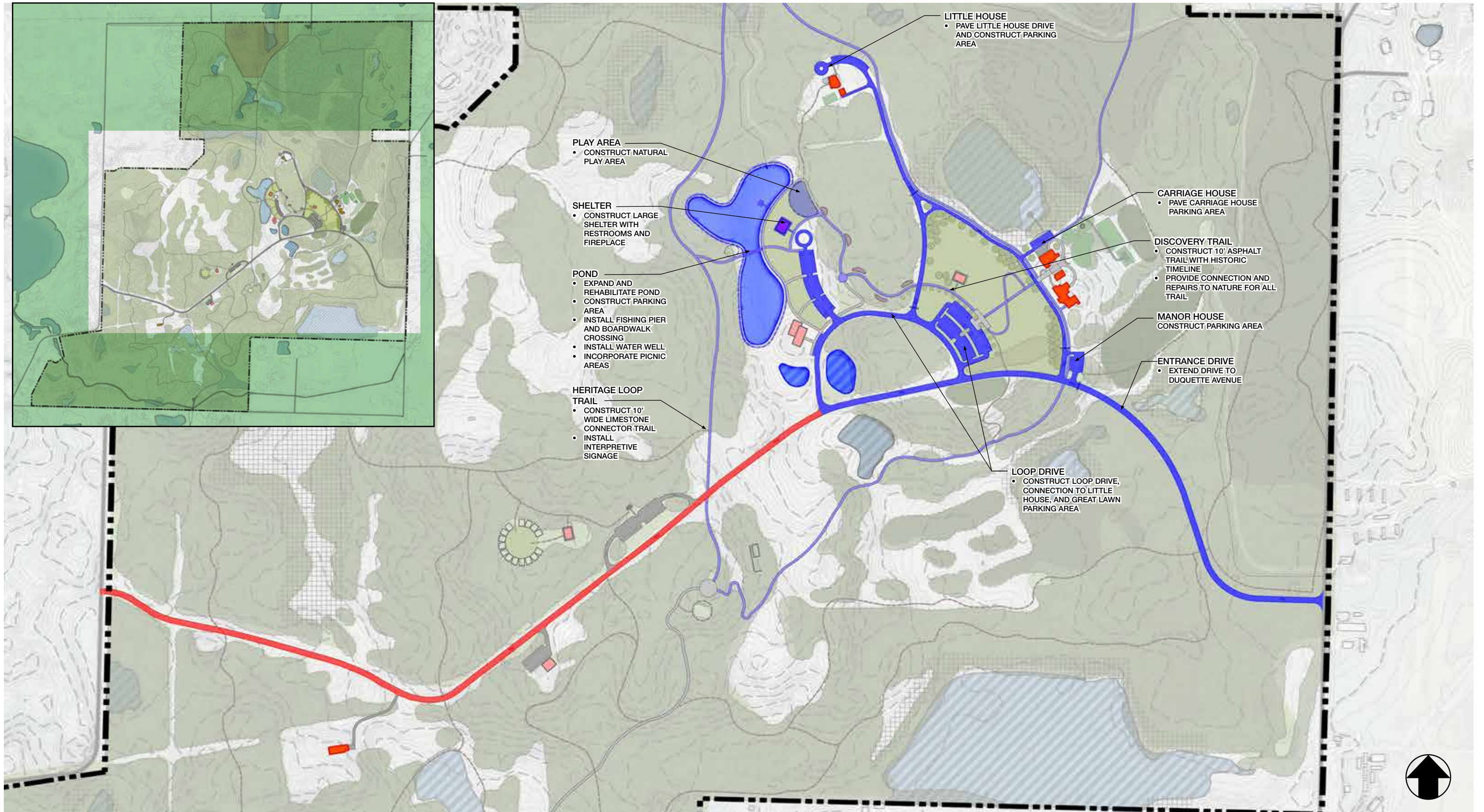
PHASING PLAN - MASTER PLAN



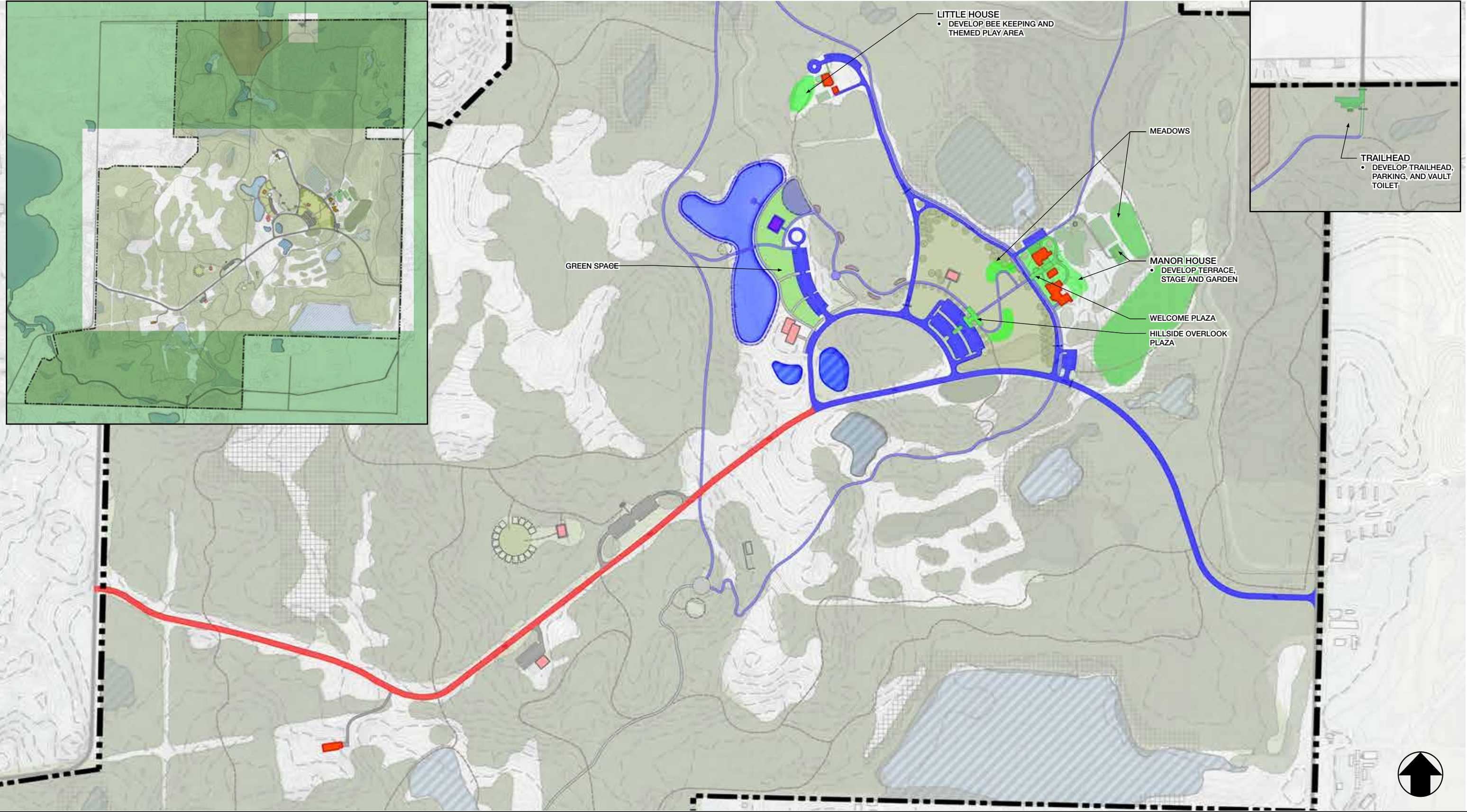
PHASING PLAN - PHASE 1



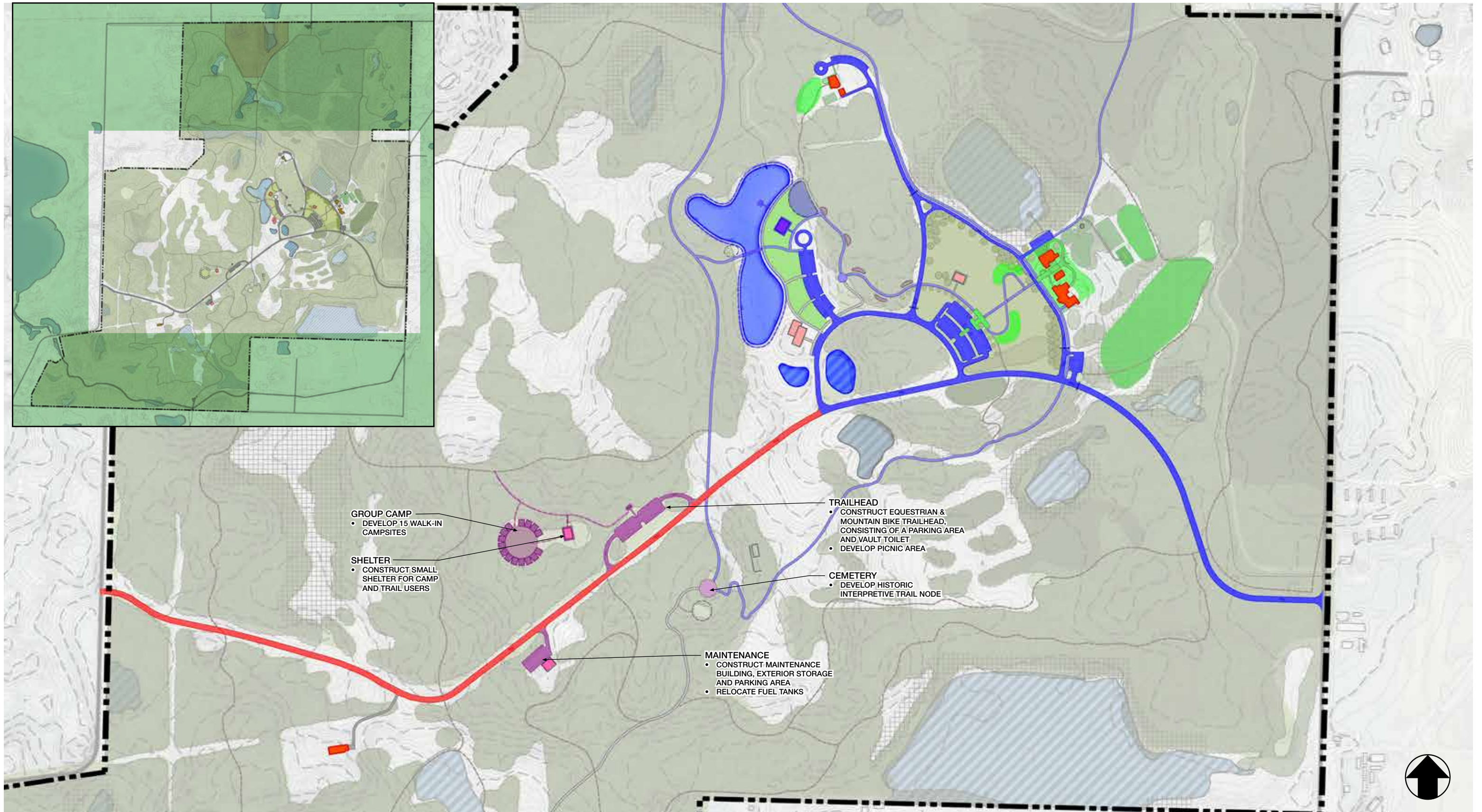
PHASING PLAN - PHASE 2



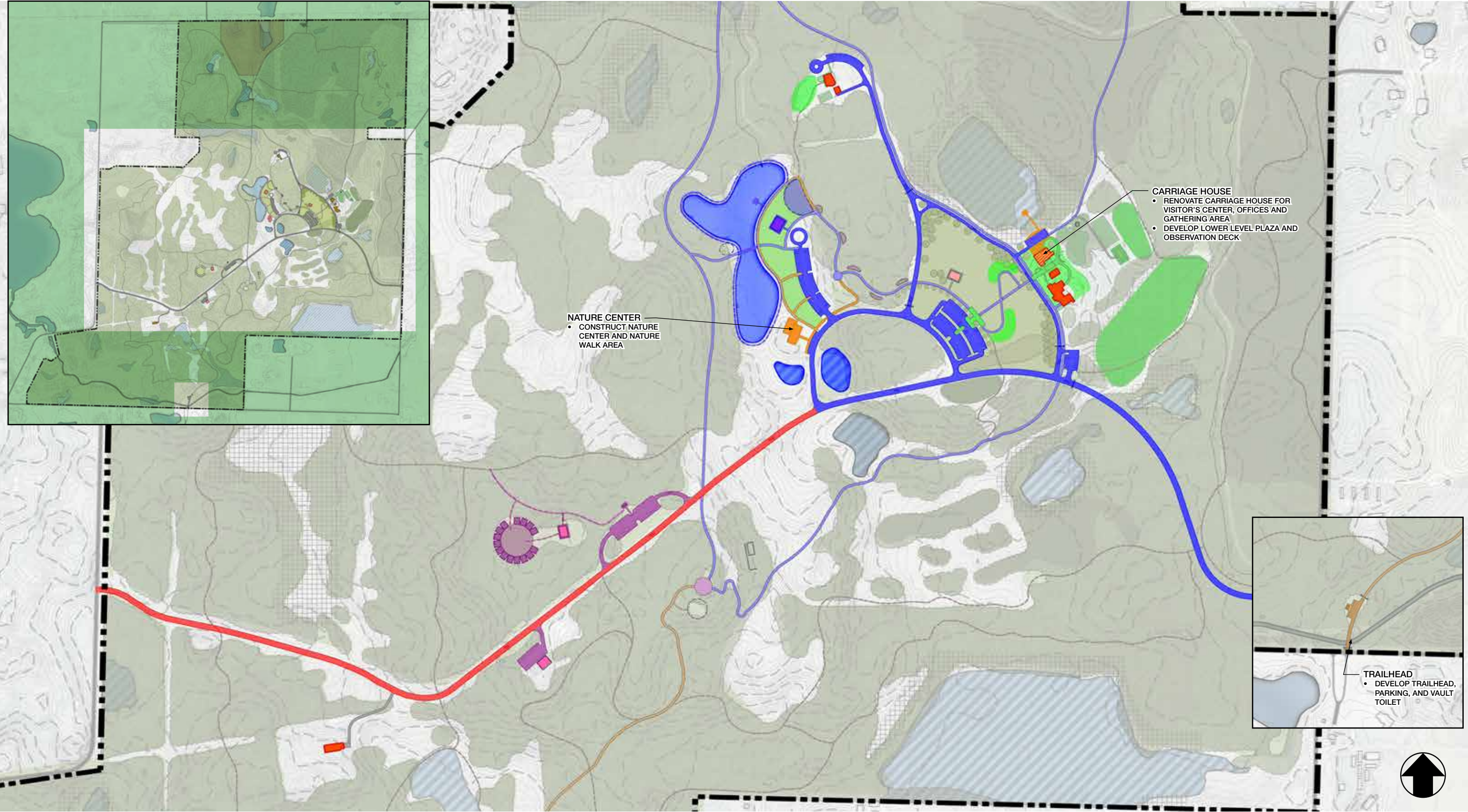
PHASING PLAN - PHASE 3



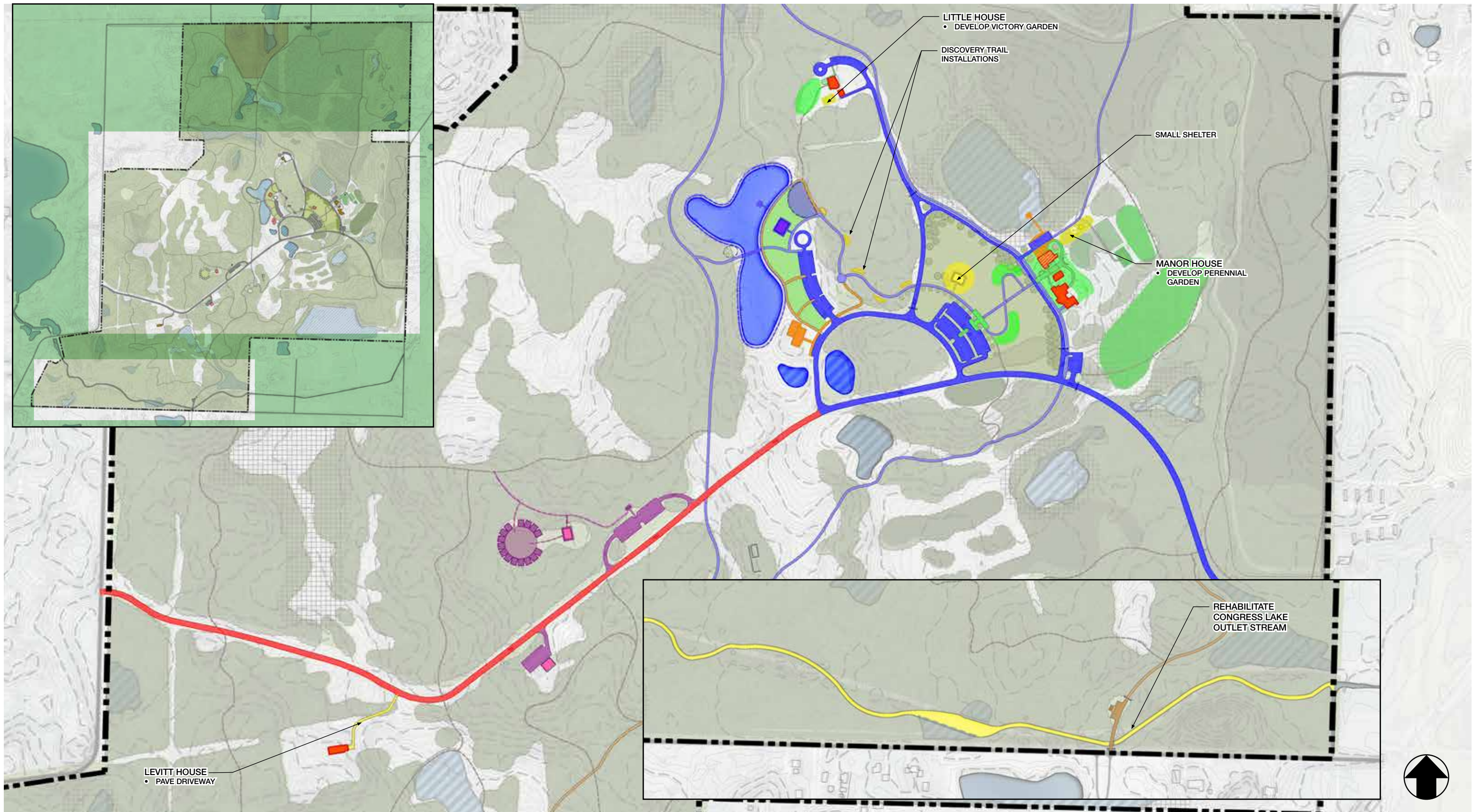
PHASING PLAN - PHASE 4



PHASING PLAN - PHASE 5



PHASING PLAN - FUTURE PHASES



Park Maintenance and Operations

2016 was the first-year Stark Parks assumed maintenance and operations responsibility of Quail Hollow Park per their 30-year agreement with ODNR. Currently, Stark Parks has maintenance & operations, programming, and ranger staff at the park on a regular basis. Below is a chart summarizing the current staffing levels at Quail Hollow.

Staff Type	Maintenance/ Operations	Programming	Ranger
Summer Hr./Weekly	64	35	25
Winter Hr./Weekly	40	35	25
Average Hr./Weekly	52	35	25

Current staff levels are minimal, as Stark Parks is still assessing how much manpower is needed to maintain and operate the park on a yearly basis. Stark Parks anticipates additional staff needs in the future along with maintenance assistance from the various volunteer associations that frequently use the park. Operation expenses for the park were also minimal in 2016 as no major improvements were to be undertaken until Stark Parks had clear direction of the park’s future via the completion of this Master Plan. Only items to maintain and upkeep the property were purchased in 2016. Stark Parks anticipates additional operational expenses in the future.

Using past maintenance and operational costs from Stark Parks as well as ODNR, the Design Team estimated future staffing, utility and maintenance needs for the various improvements proposed in this Master Plan. The full future operations and maintenance costs spreadsheet can be found in Appendix D.

To establish these future maintenance numbers the team worked with Stark Parks staff, compiled existing cost data and utilized maintenance and operational reports and studies throughout the parks and recreation industry. Each future maintenance projection was reviewed by the Design Team and Stark Parks so that the future numbers reflected the most probable future costs.

To allow Stark Parks to get an accurate idea of future maintenance costs, the future park maintenance and operations spreadsheet mimics the phasing sequence for the Master Plan. Each phase’s total annual cost is summarized in the table below. Additionally, the Team broke down the future costs per each improvement, as every improvement in each phase may not be completed at one time. This allows Stark Parks to get a sense of the maintenance and operational costs of each improvement as well, so they can make an informed decision when prioritizing future improvements as money becomes available.

Phase	Current Costs	Additional Annual Costs (assumes full build-out)
Current (2016)	\$240,000	-
Phase 1	-	\$39,000
Phase 2	-	\$38,000
Phase 3	-	\$44,000
Phase 4	-	\$34,000
Phase 5	-	\$83,000
Future Phases	-	\$30,000

Funding Opportunities

The most critical element of every plan is implementation. Without implementation, great plans sit on the shelf and never reach their full potential. The biggest hurdle when trying to implement a plan is finding funding to pay for the various improvements. Below is a listing of potential grants/loans that Stark Parks could apply for to help implement some of the recommendations from the Quail Hollow Park Master Plan.

FUNDING OPPORTUNITIES

Clean Ohio Green Space Conservation Fund	This program is dedicated to environmental conservation including acquisition of green space and the protection and enhancement of river and stream corridors. Grant recipients agree to maintain the properties in perpetuity so that they can be enjoyed and cherished for generations to come.	ODNR Land & Water Conservation Fund	This program provides funding for acquisition, development, and rehabilitation of recreational areas.	Rockefeller Foundation Grants	The Rockefeller Foundation works to spread the benefits of globalization to more people in more places around the world. Funding inquiries must fit within four core issue areas: Advance Health, Revalue Ecosystems, Secure Livelihoods & Transform Cities. Within the Transform Cities issue is a focus on pushing the U.S. over the tipping point toward transportation planning and infrastructure policy that serves the needs of 21st century America.
Clean Ohio Trails Fund	This program improves outdoor recreational opportunities by funding trails for outdoor pursuits including land acquisition for a trail, trail development, trailhead facilities, engineering, and design.	ODNR Recreational Trails Program	Includes development of urban trail linkages, trailhead & trailside facilities, acquisition of easements & property, development, and construction of new trails.	Surface Water Improvement Fund (SWIF)	This program provides up to \$150,000 for implementation of specific projects to address nonpoint source pollution and/or storm water runoff.
Community Development Block Grant	Federal funding through Housing and Urban Development (HUD) for public facilities: road resurfacing, crosswalks, street lights, traffic/pedestrian signals, barrier removal for handicap accessibility (e.g., sidewalks, curb ramps), and street furniture. The annual CDBG appropriation is allocated between states and local jurisdictions called “non-entitlement” and “entitlement” communities respectively. Entitlement communities are comprised of central cities of Metropolitan Statistical Areas (MSAs); metropolitan cities with populations of at least 50,000; and qualified urban counties with a population of 200,000 or more (excluding the populations of entitlement cities). States distribute CDBG funds to non-entitlement localities not qualified as entitlement communities. Stark County is an entitlement county and thus are responsible for the distribution of CDBG funds to non-entitlement cities within their respective boundaries. Stark County would be eligible for Community Development Allocation Program funds in Program Year 2018, though the latest proposed federal budget calls for the elimination of the CDBG program.	ODOT Active Transportation	This is a new funding source that was offered in 2017 for the first time. As part of the Ohio Strategic Highway Safety Plan (SHSP), the Ohio Department of Transportation (ODOT) offered \$1.7 M in state and federal Highway Safety Funds to support safe, active transportation. This is in a response to the rise in pedestrian and bicyclist injuries and fatalities across the state, as well as an ongoing chronic disease epidemic largely preventable by creating environments that support active lifestyles. These funds are reimbursable.	The People For Bikes Community Grant Program	PeopleForBikes Community Grant Program supports bicycle infrastructure projects and targeted advocacy initiatives that make it easier and safer for people of all ages and abilities to ride
Congestion Mitigation & Air Quality Improvement Program	Congestion Mitigation and Air Quality (CMAQ) funds can only be used for projects that help reduce traffic congestion and improve air quality. These funds may be used for bike facilities.	ODOT Metro Parks Program	The Ohio Parks & Recreation Association (OPRA) serves as the program manager. Funds are provided to the park districts through the Biennial Transportation Appropriations Act. Biennial funding is currently \$4.4M. Each park district gets an individual allocation determined by using the percentage of total vehicle registrations by county as provided by the Ohio Department of Public Safety. OPRA requires that each of the park districts must own land or hold lease to land in the state of Ohio. All costs in excess of the metro park district allocation are paid by the park district. Funds can be used for the materials and labor necessary for construction, reconstruction, improvement, repair, and maintenance of park drives, park roads, park access roads, parking lots, and for purchase and hauling of materials, and for equipment rental.	Transportation Alternatives	The Transportation Alternatives Set-Aside authorizes funding for programs and projects defined as transportation alternatives, including on- and off-road pedestrian and bicycle facilities, infrastructure projects for improving non-driver access to public transportation and enhanced mobility, community improvement activities such as historic preservation and vegetation management, and environmental mitigation related to storm water and habitat connectivity; recreational trail projects; Safe Routes to School projects; and projects for planning, designing, or constructing boulevards and other roadways largely in the right-of-way of former divided highways.
Lake Erie Protection Fund	This program provides small grants to fund research and on-the-ground projects aimed at protecting, preserving and restoring Lake Erie or its tributary watersheds. These funds are only attributable to areas of the park within the Lake Erie Watershed.	Ohio EPA Water Resource Restoration Sponsor Program	This program provides funding through the EPA for stream and wetland restoration and preservation	Water Pollution Control Loan Fund (WPCLF)	This program provides financial and technical assistance to public or private applicants for planning, design and construction of projects to protect or improve the quality of Ohio’s water resources.
		Ohio Nonpoint Source Pollution Control Program	The program aims to correct Nonpoint Source Pollution caused water quality impairment to Ohio’s surface water resources. Section 319(h) implementation grant funding is targeted to Ohio waters where NPS pollution is a significant cause of aquatic life use impairments.		