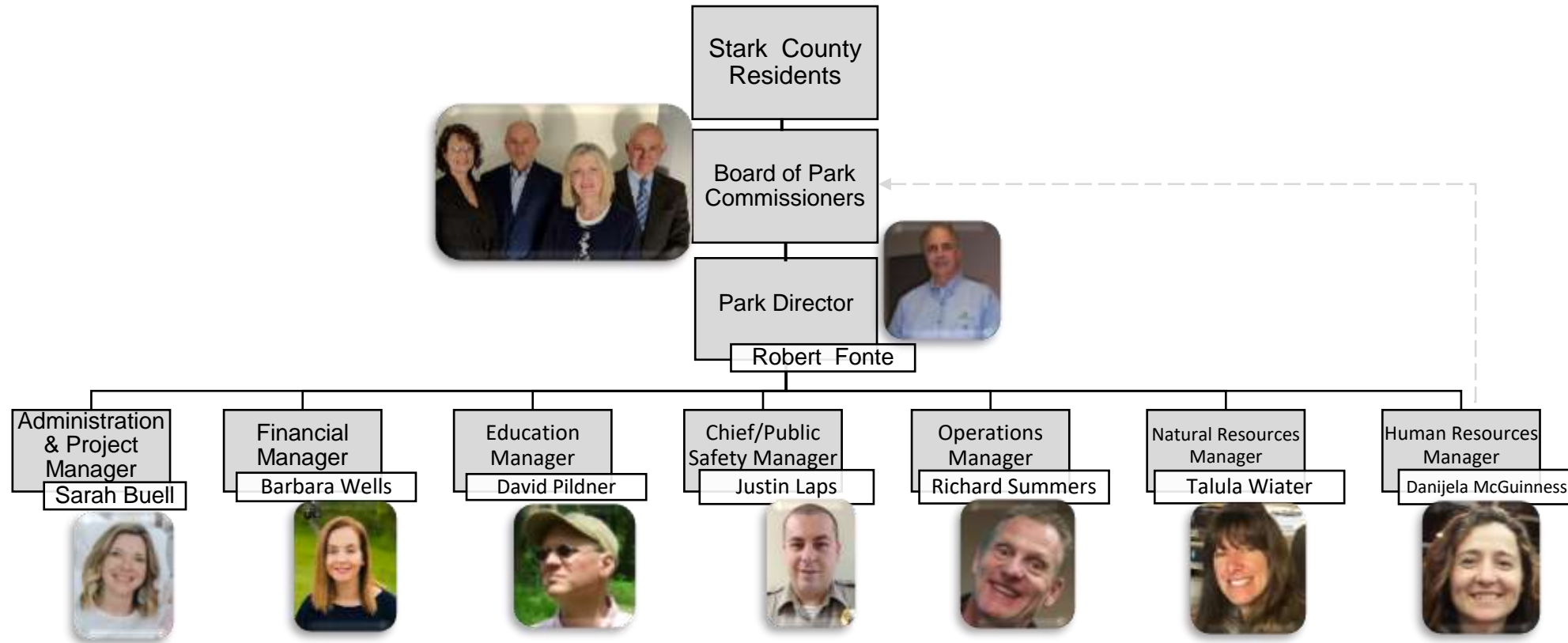
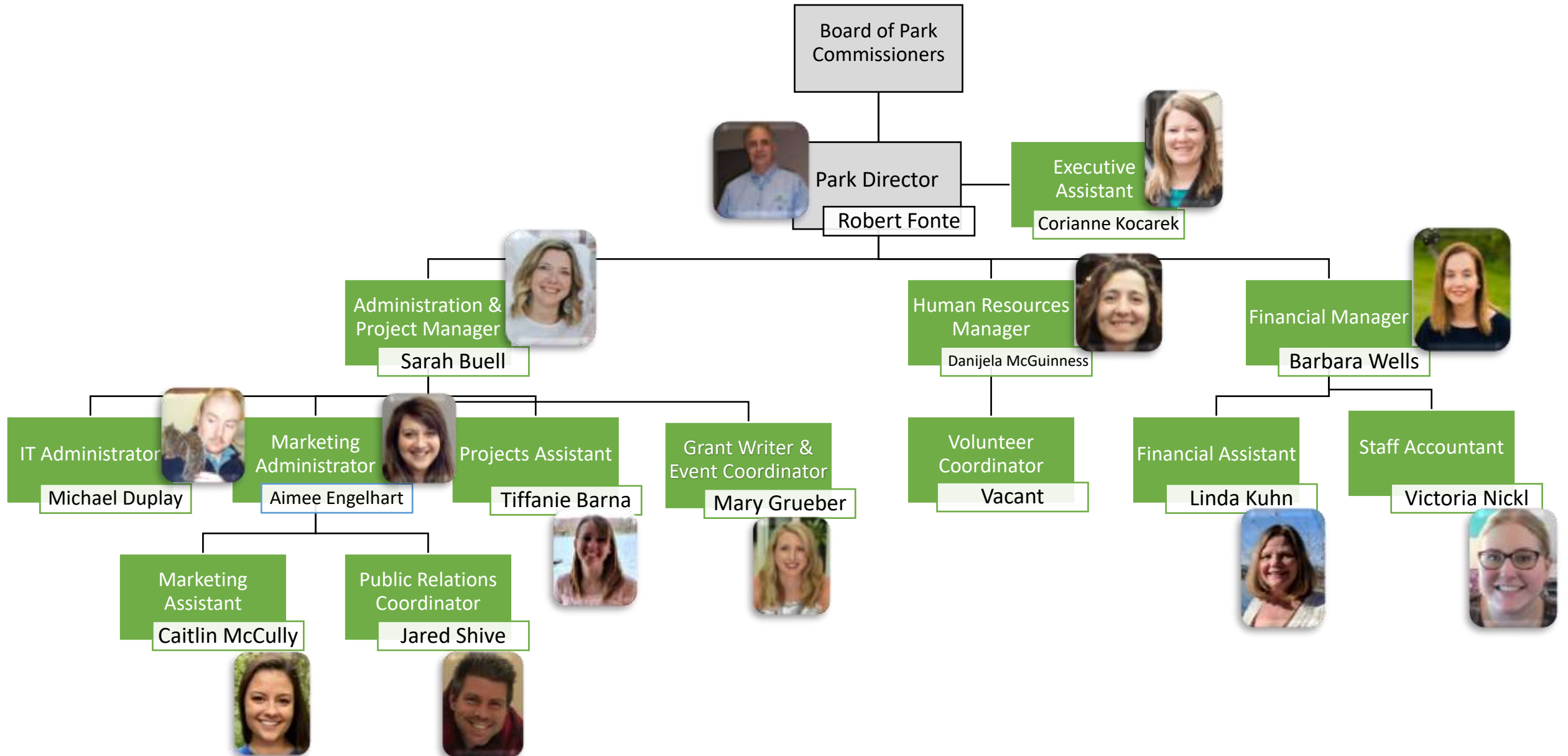


**STARK COUNTY PARK DISTRICT**  
**Management Team**  
**Updated: January 2021**



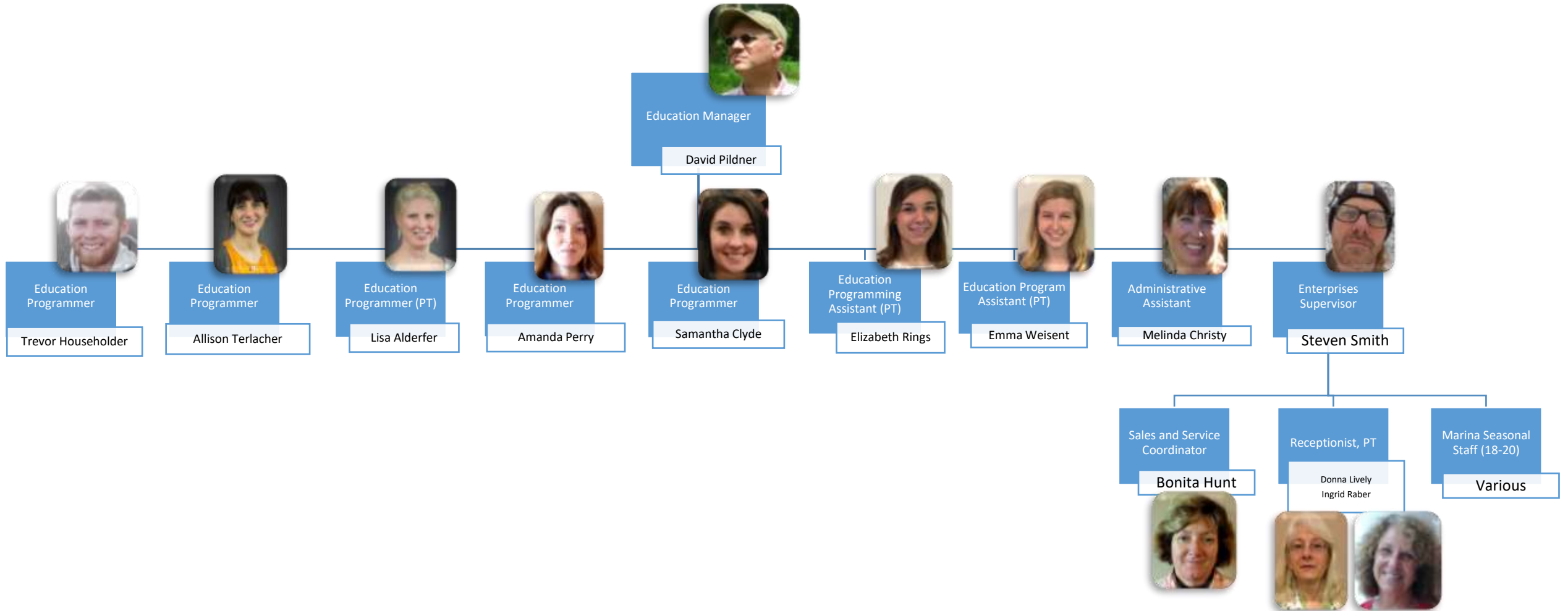
**STARK COUNTY PARK DISTRICT  
Administration Department (14 FT)**



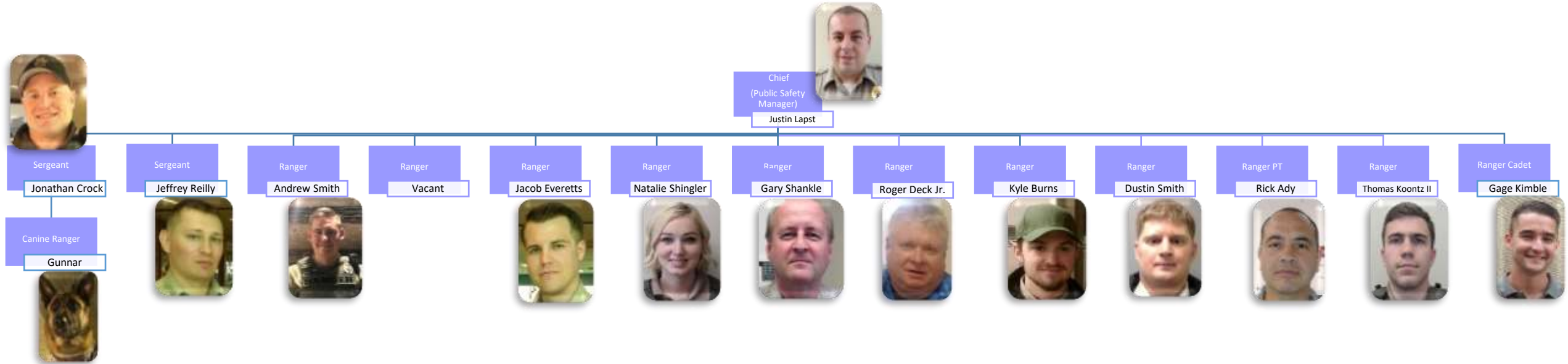
01/01/2021

FT = Full Time, PT = Part TimeS:\HUMAN RESOURCES\ORGANIZATIONAL CHART\2021 Organization Chart.January 2021.docx

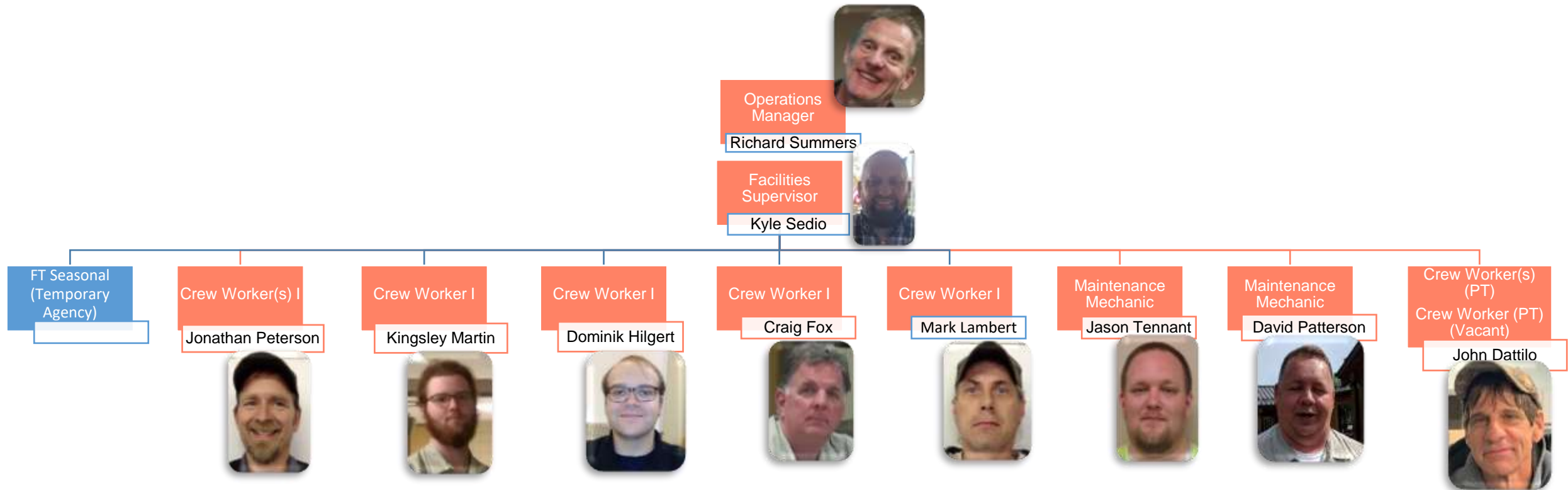
**STARK COUNTY PARK DISTRICT**  
**Education Department (8 FT, 5 PT, 18-20 Seasonals)**



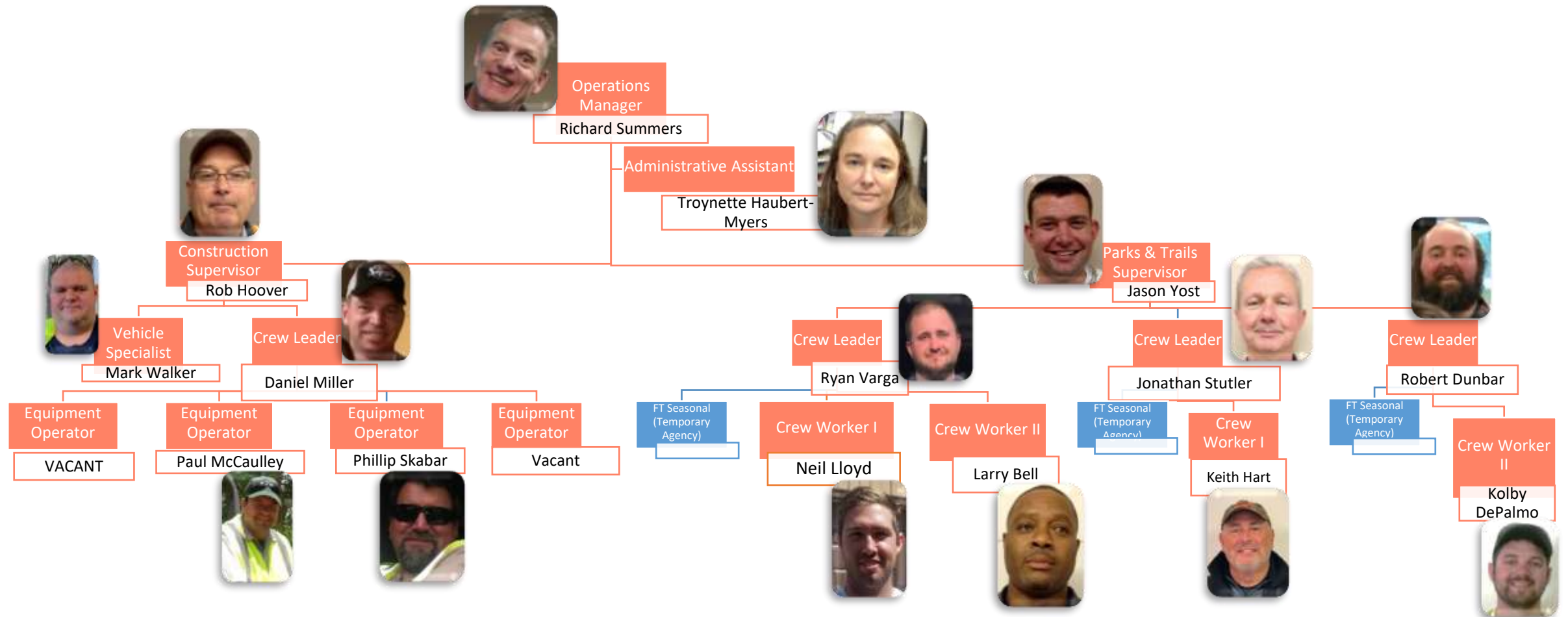
**STARK COUNTY PARK DISTRICT**  
**Public Safety Department (13 FT, 2 PT)**



**STARK COUNTY PARK DISTRICT**  
**Operations Department**  
**Facilities Group (8 FT, 2 PT, 1 FT Temp)**



**STARK COUNTY PARK DISTRICT**  
**Operations Department (2)**  
**Park and Trail Maintenance (8 FT, 3 FT Temps) and Construction Groups (7 FT)**



**STARK COUNTY PARK DISTRICT**  
**Natural Resources Department (8 FT, 3 PT, 9 Seasonals, 6 Interns)**

